

THE HARI

L O N D O N
BELGRAVIA

THE COCKTAIL GALLERY

Where cocktails meet creativity.

This menu draws on defining modern art movements, from the honesty of Realism to the boldness of Pop Art, each cocktail translating artistic expression into flavour, aroma, texture, and presentation.



Creativity meets sustainability. Our cocktails use B-Corp Certified products where possible and responsibly sourced ingredients, prepared with a low-waste approach using seasonal produce, whole fruit and house-made syrups from surplus ingredients. Garnishes and techniques are designed to minimise waste while enhancing flavour.

More than a drinks list, this menu is a small gallery of flavour and thoughtful craft.

REALIST

£ 19.00

Beesou honey aperitif, Italicus bergamot, Ratafia cherry aperitif, green apple, lemon, Double Dutch pomegranate & basil soda, Chapel Down Brut English sparkling wine

Refreshing · Light · Spritz



REALIST 0%

£ 13.00

Everleaf Forest aperitif, Caleno Light & Zesty non-alcoholic spirit, Pathfinder non-alcoholic spirit, apple, lemon, grenadine, Double Dutch pomegranate & basil soda, Wild Idol brut

Refreshing · Light · Spritz



The Gleaners (1857) | Realist artists sought to depict the world as it really was with a focus on ordinary people.



Water Lilies (1915) | Impressionism captures the fleeting moments of modern life using vivid colours.

IMPRESSIONIST

£ 20.00

Brockman's Agave Cut, St Germain elderflower, lime & mint cordial made from surplus products, cucumber, saline solution, Perrier-Jouet Brut Champagne

Floral · Refreshing · Bubbly



IMPRESSIONIST 0%

£ 14.00

Caleno Light & Zesty non-alcoholic spirit, lime & mint cordial made from surplus products, elderflower, lime, cucumber, saline solution, pink grapefruit soda, Wild Idol brut.

Floral · Refreshing · Bubbly



EXPRESSIONIST

Nc'Nean Organic Single Malt Scotch Whisky, Fielden English Rye Whisky, Caol Ila Single Malt Scotch Whisky, apricot, chocolate

Boozy · Smoky · Mature

£ 22.00



The Scream (1894) | Expressionism is expressing inner emotions using bold colours and distorted forms.

SURREALIST

Two Drifters Overproof Spiced Pineapple Rum, Drop Works White Rum infused with surplus breakfast croissants, banana, vanilla, almond syrup, lime, coconut milk

Tropical · Velvety · Smooth

£ 19.00



The Enigma of a Day (1914) influenced the Surrealist movement; expressing the human mind's subconscious.



Violin and Candlestick (1910) | Cubism uses geometric, fragmented forms to create a sense of abstraction.

CUBIST

Brockman's Intensely Smooth Gin, Amaretto Disaronno, fig, lemon, home-made blueberry syrup, blackberries, Miraculous Foamer

Sweet · Fruity · Refreshing

£ 20.00



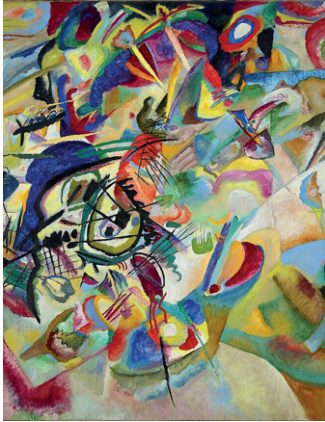
CUBIST 0%

Caleno Light & Zesty non-alcoholic spirit, Everleaf Mountain aperitif, home-made blueberry syrup, lemon, blackberries, almond, pineapple

Sweet · Fruity · Refreshing

£ 14.00





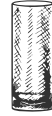
Composition VII (1913) | Abstract Expressionism conveys emotion using instinctive drips and splatters.

ABSTRACT

£ 21.00

*Mijenta Blanco Tequila,
Muyu Jasmine, Paragon
Labdanum cordial, lychee,
Double Dutch soda water*

Floral · Complex · Refreshing

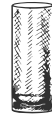


ABSTRACT 0%

£ 15.00

*Everleaf Mountain aperitif,
Monin Jasmine, Paragon
Labdanum cordial, lychee,
Double Dutch soda water*

Floral · Complex · Refreshing

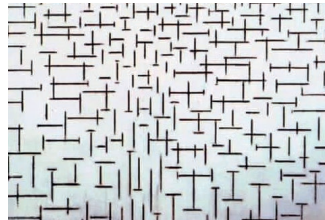


MINIMALIST

£ 20.00

*Sapling Climate Positive
Organic vodka, Café Solo Cold
Brew coffee liqueur, Licor 43
Horchata and almond foam,
fresh coffee*

Toasted · Nutty · Ying & Yang



Pier and Ocean (1915) | Minimalism reduces art to its essential elements, using simple shapes and colours.

POP-ART

£ 19.00

*Sapling Climate Positive Organic
gin, Seatrus Acqua di Mare gin,
Cedrino, dry vermouth*

Bittersweet · Vibrant · Citrusy



Andy Warhol-Inspired (2026) | Pop-art sought to elevate popular culture.

THE HARI

LONDON
BELGRAVIA

THE DRINKS MENU



THE HARITINI COLLECTION

Experience 'The Haritini Collection' each with The Hari gin at its heart.

| | |
|--|---------|
| THE MARTINEZ <i>Hari Gin, Cocchi di Torino, Maraschino, orange, Angostura bitters</i> | £ 21.00 |
| THE DRY MARTINI <i>Hari Gin, dry vermouth, bitters</i> | £ 19.00 |
| THE VESPER MARTINI <i>Hari Gin, vodka, Lillet Blanc</i> | £ 19.00 |

APERITIVO HOUR

MONDAY - FRIDAY
5pm - 7pm

Buy any cocktail from the menu and enjoy a complimentary plate from the *Cicchetti* section.

NON-ALCOHOLIC

| | |
|------------------------|---------|
| Ⓟ PATHFINDER | £ 10.00 |
| Ⓟ CALENO DARK & SPICY | £ 10.00 |
| Ⓟ CALENO LIGHT & ZESTY | £ 10.00 |
| Ⓟ EVERLEAF MARINE | £ 12.00 |
| Ⓟ EVERLEAF FOREST | £ 12.00 |
| Ⓟ EVERLEAF MOUNTAIN | £ 12.00 |

BOTTLED BEER

| | |
|---------------------------|--------|
| Ⓟ NOAM UNFILTERED (340ml) | £ 9.50 |
| Ⓟ SASSY CIDRE | £ 9.00 |
| MEANTIME PALE ALE | £ 8.50 |
| ASAHI SUPER DRY | £ 8.00 |
| PERONI | £ 7.50 |
| PERONI 0% | £ 6.50 |

WINE BY THE GLASS

CHAMPAGNE

GLASS 125ML/BOTTLE

PERRIER-JOUET - BLANC DE BLANC
Épernay, France £ 35.00 / £ 190.00

PERRIER-JOUET - BLANSON ROSÉ
Épernay, France £ 32.00 / £ 175.00

PERRIER-JOUET - GRAND BRUT
Épernay, France £ 21.00 / £ 115.00

SPARKLING

GLASS 125ML/BOTTLE

Ⓑ CHAPEL DOWN - ROSÉ RESERVE
Kent, England £ 22.00 / £ 110.00

Ⓑ CHAPEL DOWN - BRUT RESERVE
Kent, England £ 18.00 / £ 98.00

WILD IDOL - SPARKLING ROSÉ 0%
Rheinhessen, Germany £ 14.00 / £ 80.00

WILD IDOL - SPARKLING BRUT 0%
Rheinhessen, Germany £ 14.00 / £ 80.00

ROSÉ WINE

GLASS 175ML/BOTTLE

CHATEAUX D'ECLANS - WHISPERING ANGEL
- GRANACHE
Cothe de Provence, France £ 21.00 / £ 78.00

DOMINI VENETI - CHIARETTO DI BARDOLINO
- BLEND (Molinara, Corvina, Rondinella)
Veneto, Italy £ 14.00 / £ 55.00

WHITE WINE

GLASS 175ML/BOTTLE

| | |
|---|-------------------|
| ALAIN GIRARD & FILS - DOMAINE DES BROSSES – SAUVIGNON BLANC <i>Sancerre, France</i> | £ 23.00 / £ 88.00 |
| DOMAINE PASSY LES CLOU – CHARDONNAY <i>Chablis, France</i> | £ 20.00 / £ 85.00 |
| BODEGA GARZÓN - RESERVA ALBARIÑO <i>Maldonado, Uruguay</i> | £ 16.00 / £ 65.00 |
| LA GIUSTINIANA – LUGARARA GAVI DI GAVI – CORTESE <i>Piedmont, Italy</i> | £ 14.00 / £ 58.00 |
| AZAHAR – LOURERIO <i>Vinho verde, Portugal</i> | £ 12.00 / £ 40.00 |

RED WINE

GLASS 175ML/BOTTLE

| | |
|--|--------------------|
| FINCA VALPIEDRA – RJOCA RESERVA 2016 – BLEND (Tempranillo, Graciano, Maturana Tinta) <i>Rioja, Spain</i> | £ 27.00 / £ 108.00 |
| CLAUDY BAY – 2021 - PINOT NOIR <i>Marlborough, New Zealand</i> | £ 24.00 / £ 95.00 |
| LAMOLE DI LAMOLE – DUELAME CHIANTI CLASSICO 2021 – SANGIOVESE <i>Tuscany, Italy</i> | £ 20.00 / £ 85.00 |
| FERRATON PÈRE & FILS – SAMORÈNS CÔTES- DU-RHÔNE ROUGE 2023 – GRANACHE <i>Rhône Valley, France</i> | £ 14.00 / £ 50.00 |
| MEZZACORONA – CASTEL FIRMIAN 2022 – MERLOT <i>Trentino-Alto Adige, Italy</i> | £ 12.00 / £ 42.00 |

For our extended Wine & Spirits List, please ask your server.

SPIRITS

VODKA

| | |
|-----------------|---------|
| KONIK'S TAIL | £17.00 |
| ⓑ SAPLING VODKA | £ 16.00 |
| GREY GOOSE | £ 16.00 |
| ABSOLUT ELYX | £ 16.00 |
| BELVEDERE PURE | £ 15.00 |
| TITO'S | £ 14.00 |
| ALTAMURA | £ 14.00 |
| HAKU | £ 13.00 |
| KETEL ONE | £ 13.00 |
| ABSOLUT | £ 12.00 |

GIN

| | |
|------------------------|----------------|
| KI NO BI | £ 20.00 |
| ⓑ PORTOFINO | £ 20.00 |
| MONKEY 47 | £ 19.00 |
| GIN MARE | £ 19.00 |
| SEATRUS | £18.00 |
| PLYMOUTH NAVY STRENGTH | £ 18.00 |
| ⓑ BROCKMAN'S AGAVE CUT | £ 16.00 |
| HENDRICK'S | £ 15.00 |
| LONDON NO 3 | £ 15.00 |
| ⓑ SAPLING GIN | £ 15.00 |
| TANQUERAY 10 | £ 15.00 |
| THE HARI GIN | £ 14.00 |
| ⓑ MERMAID PINK | £ 14.00 |
| ⓑ HAYMANS SLOE | £ 14.00 |
| RENEGADE | £ 14.00 |
| ROKU | £ 13.00 |
| ⓑ BROCKMAN'S | £ 13.00 |
| TANQUERAY | £ 12.00 |
| BOMBAY SAPPHIRE | £ 12.00 |
| ⓑ HAYMAN'S DRY | £ 12.00 |

RUM, RHUM, RON

| | |
|-------------------------------------|----------------|
| HAVANA MAXIMO | £ 250.00 |
| ZACAPA XO | £ 38.00 |
| EL DORADO 21 | £ 30.00 |
| EL DORADO 15 | £ 20.00 |
| DIPLOMATICO RESERVA EXCLUSIVA | £ 18.00 |
| ⓑ TWO DRIFTERS SPICED PINEAPPLE RUM | £ 17.00 |
| PLANTARAY PINEAPPLE | £ 15.00 |
| BRUGAL 1888 | £ 15.00 |
| ANNE BONY SPICED | £ 15.00 |
| THE HARI RUM | £ 14.00 |
| ⓑ TWO DRIFTERS LIGHT SPICED RUM | £ 14.00 |
| ⓑ TWO DRIFTERS WHITE RUM | £ 14.00 |
| HAVANA 7 | £ 13.00 |
| DROP WORKS WHITE | £ 13.00 |
| BACARDI CARTA BLANCA | £ 12.00 |
| GOSLING BLACK SEAL | £ 12.00 |

TEQUILA AND MEZCAL

| | |
|---|----------|
| CLASE AZUL GOLD EDITION | £ 110.00 |
| PATRON - GRAN PADRON PIEDRA EXTRA ANEJO | £ 90.00 |
| DON JULIO 1942 | £ 67.00 |
| CLASE AZUL REPOSADO | £ 55.00 |
| ENEMIGO 89 ANEJO CRISTALINO | £ 36.00 |
| CLASE AZUL PLATA | £ 30.00 |
| CASAMIGOS AÑEJO | £ 28.00 |
| CASAMIGOS MEZCAL | £ 28.00 |
| PATRON ANEJO | £ 25.00 |
| CASAMIGOS REPOSADO | £ 24.00 |
| DON JULIO REPOSADO | £ 22.00 |
| ⓑ MIJENTA REPOSADO | £ 20.00 |
| ENEMIGO BLANCO | £ 20.00 |

| | |
|-----------------------------|---------|
| DON JULIO BLANCO | £ 18.00 |
| MONTELOBOS MEZCAL JOVEN | £ 17.00 |
| ⓑ MIJENTA BLANCO | £ 20.00 |
| MEZCAL AMORES VERDE MOMENTO | £ 15.00 |
| ALTOS PLATA | £ 14.00 |

SINGLE MALT SCOTCH WHISKY

HIGHLANDS

| | |
|------------------------|---------|
| DALMORE KING ALEXANDER | £ 90.00 |
| GLENMORANGIE 18 | £ 35.00 |
| DALMORE 15 | £ 25.00 |
| DALMORE CIGAR MALT | £ 24.00 |
| ⓑ NC'NEAN ORGANIC | £ 18.00 |

SPEYSIDE

| | |
|----------------------------|---------|
| MACALLAN 18 SHERRY CASK | £ 90.00 |
| GLENLIVET 18 | £ 44.00 |
| GLENFIDDICH 18 | £ 36.00 |
| MACALLAN 12 DOUBLE CASK | £ 28.00 |
| BALVENIE 14 CARIBBEAN CASK | £ 28.00 |
| GLENFARCLAS 15 | £ 25.00 |
| GLENFIDDICH 15 | £ 22.00 |
| BALVENIE 12 | £ 22.00 |

ISLAY

| | |
|--------------|----------|
| BOWMORE 25 | £ 105.00 |
| LAGAVULIN 16 | £ 27.00 |
| BOWMORE 15 | £ 20.00 |
| CAOL ILA 12 | £ 19.00 |
| ARDBERG 10 | £ 18.00 |
| LAPHROAIG 10 | £ 16.00 |

ISLAND

| | |
|------------------|----------|
| TALISKER 30 | £ 310.00 |
| HIGHLAND PARK 18 | £ 35.00 |
| OBAN 14 | £ 28.00 |
| TALISKER 10 | £ 17.00 |
| HIGHLAND PARK 12 | £ 16.00 |

LOWLAND

| | |
|--------------------------|---------|
| AUCHENTOSHAN 18 | £ 25.00 |
| AUCHENTOSHAN THREE WOODS | £ 16.00 |

BLENDED SCOTCH WHISKY

| | |
|------------------------|---------|
| CHIVAS 25 | £ 65.00 |
| CHIVAS 21 ROYAL SALUTE | £ 55.00 |
| JOHNNIE WALKER BLUE | £ 52.00 |
| CHIVAS 18 | £ 32.00 |
| JOHNNIE WALKER GOLD | £ 30.00 |
| JOHNNIE WALKER BLACK | £ 12.00 |

JAPANESE WHISKY

| | |
|-----------------------|---------|
| HAKUSHU 18 | £110.00 |
| YAMAZAKI 12 | £ 47.00 |
| HAKUSHU 12 | £ 45.00 |
| HIBIKI HARMONY | £ 32.00 |
| NIKKA FROM THE BARREL | £ 21.00 |
| CHITA | £ 19.00 |
| TOKI | £ 14.00 |

ENGLISH, IRISH & WELSH WHISKEY

| | |
|--|---------|
| THE LAKES GALAXIA (<i>Limited-Edition</i>) | £ 52.00 |
| THE LAKES WHISKYMAKERS NO.7 | £ 26.00 |
| REDBREAST 12 | £ 19.00 |
| JAMESON BLACK BARREL | £ 17.00 |

| | |
|-------------|---------|
| FIELDEN RYE | £ 18.00 |
| ABER FALLS | £ 15.00 |
| JAMESON | £ 12.00 |

AMERICAN WHISKEY

| | |
|----------------------------|---------|
| WHISTLE PIG 10 | £ 29.00 |
| ELIJAH CRAIG SMALL BATCH | £ 18.00 |
| SAZERAC RYE | £ 18.00 |
| EAGLE RARE 10 | £ 15.00 |
| JACK DANIELS SINGLE BARREL | £ 14.00 |
| WHISTLE PIG 6Y | £ 14.00 |
| WOODFORD RESERVE | £ 14.00 |
| BUFFALO TRACE | £ 13.00 |
| Ⓟ MAKER'S MARK | £ 12.00 |

EAU DE VIE

COGNAC

| | |
|---------------------------|----------|
| HENNESSY PARADIS IMPERIAL | £ 500.00 |
| HENNESSY PARADIS | £ 250.00 |
| HENNESSY XO | £ 48.00 |
| REMY MARTIN XO | £ 44.00 |
| HENNESSY VS | £ 14.00 |

ARMAGNAC

| | |
|------------------------|---------|
| BARON DE SIGOGNAC VSOP | £ 16.00 |
|------------------------|---------|

CALVADOS

| | |
|-------------|---------|
| DUPONT VSOP | £ 22.00 |
|-------------|---------|

GRAPPA

| | |
|------------|---------|
| TIGNANELLO | £ 22.00 |
|------------|---------|

SOFT DRINKS

| | |
|---|--------|
| COCA COLA /COKE ZERO | £ 5.20 |
| CRODINO | £7.00 |
| JUICES | £ 4.20 |
| <i>Apple Cranberry Lychee Pineapple Tomato</i> | |
| FRESHLY SQUEEZED JUICES | £ 7.00 |
| <i>Orange Grapefruit</i> | |
| ⓑ DOUBLE DUTCH | £ 4.20 |
| <i>Lemonade Soda Water Tonic Light Tonic Ginger Ale Ginger Beer</i> | |
| BELU FILTERED STILL/SPARKLING WATER (75CL) | £ 5.00 |

TEA & COFFEE

BLACK TEA

| | |
|--|--------|
| THE HARI BESPOKE BLEND | £ 7.75 |
| <i>A rich black tea scented with ripe vanilla, raisins and black sour cherries</i> | |
| JING ENGLISH BREAKFAST | £ 6.25 |
| <i>Broad, full, rich and malty - a fantastic breakfast tea</i> | |
| JING EARL GREY | £ 6.25 |
| <i>Fragrant and balanced classic of rich Ceylon tea lifted by bergamot</i> | |
| JING DECAFFEINATED CEYLON | £ 6.25 |
| <i>A smooth full-bodied Ceylon, without the caffeine</i> | |
| JING CHAI TEA | £ 6.75 |
| <i>A bold and warming blend of Sri Lankan tea and spices</i> | |

OO LONG TEA

| | |
|--|--------|
| JING ALI SHAN | £ 7.75 |
| <i>One of Taiwan's most celebrated with strawberry and cream notes</i> | |

WHITE TEA

| | |
|--|--------|
| JING JASMINE SILVER NEEDLE | £ 6.25 |
| <i>A sweet and soothing jasmine scented white tea from China</i> | |

GREEN TEA

| | |
|--|--------|
| JING MOROCCAN MINT | £ 7.75 |
| <i>A refreshing blend of Chinese green tea with peppermint leaf</i> | |
| JING JADE SWORD | £ 7.75 |
| <i>Exquisite hand rolled green tea pearls scented with fresh jasmine flowers</i> | |
| JING FLOWERING JASMINE & LILY | £ 7.75 |
| <i>A fragrant and full bodied green tea with lively aroma</i> | |

HERBAL TEA

| | |
|---|--------|
| JING WHOLE ROSEBUDS | £ 7.75 |
| <i>Beautiful pink rosebuds, for a clean, fragrant and leafy infusion</i> | |
| JING PEPPERMINT | £ 6.25 |
| <i>A bright and intensely refreshing whole peppermint leaf infusion</i> | |
| JING CHAMOMILE FLOWERS | £ 6.25 |
| <i>A soothing and mellow whole chamomile flower herbal infusion</i> | |
| JING ROOIBOS | £ 6.25 |
| <i>High in antioxidants, caffeine free, tangy with hints of bitter orange</i> | |
| JING BLACKCURRANT & HIBISCUS | £ 6.25 |
| <i>An invigorating herbal infusion, with a sweet floral aroma</i> | |

COFFEE

All of the below coffees are also available as decaffeinated

| | |
|--------------------------|-----------------|
| SINGLE / DOUBLE ESPRESSO | £ 4.75 / £ 5.25 |
| LATTE | £ 6.25 |
| ICED LATTE | £ 6.25 |
| MATCHA LATTE | £ 7.75 |
| MACCHIATO | £ 5.75 |
| CAPPUCCINO | £ 6.25 |
| AMERICANO | £ 6.25 |
| HOT CHOCOLATE | £ 5.25 |

THE HARI

L O N D O N
BELGRAVIA

THE FOOD MENU



CICCHETTI

Available from 12:00pm

| | |
|--|---------|
| MINI SLIDERS <i>Three Angus beef mini burgers, brioche buns, Cheddar & relish</i> | £ 20.00 |
| TIGER PRAWNS <i>Grilled prawns with garlic, chilli & parsley</i> | £ 14.00 |
| CALAMARI <i>Fried squid with red chilli, spring onion & lemon aioli</i> | £ 12.00 |
| FOCACCIA & PARMA HAM <i>Apulian focaccia served with Parma ham</i> | £ 10.00 |
| STRACCIATELLA CROSTINI (V) <i>Topped with roasted cherry tomato and basil oil</i> | £ 10.00 |
| TRUFFLE ARANCINI (V) <i>With truffle mayo</i> | £ 8.00 |
| NOCELLARA OLIVES (Vg) <i>Sicilian green olives</i> | £ 5.00 |

THE HARI CLASSICS

| | |
|---|---------|
| THE HARI BURGER <i>6oz Angus beef patty on brioche bun, Cheddar, bacon, lettuce & pickled gherkin, served with fries</i> | £ 24.00 |
| THE HARI CLUB SANDWICH <i>Chicken, bacon, hard-boiled egg, lettuce, tomato & mayo on white or brown toasted bread, served with fries</i> | £ 22.00 |
| MONTANARA PIZZA (V) <i>Southern fried pizza, basil and tomato base & parmesan</i> | £ 19.50 |
| MEDITERRANEAN FALAFEL WRAP (Vg) <i>Hummus, falafel, crispy leaf & pickled vegetables, served with fries</i> | £ 18.00 |
| CAESAR SALAD <i>Served with lettuce, croutons, anchovies, Parmesan</i> | £ 14.00 |
| <i>Add grilled chicken</i> | £ 7.00 |
| <i>Add grilled tiger prawns</i> | £ 10.00 |
| <i>Add bacon</i> | £ 2.00 |

SIDES

| | |
|--------------------|---------|
| TRUFFLE OIL FRIES | £ 11.00 |
| SWEET POTATO FRIES | £ 8.00 |
| FRIES | £ 7.00 |

DESSERTS

DOUGHNUT BALLS (V) £ 15.00
Filled with Nutella, pistachio or caramel

TIRAMISÚ (V) £ 14.00
A classic tiramisu made with delicate layers of mascarpone & espresso-soaked ladyfingers

CAPRESE AL LIMONE (V) £ 14.00
Caprese with lemon and white chocolate & fior di latte ice cream

NOCCIOLATO (V) £ 12.00
Chocolate & hazelnut sphere, frangipane & warm Gianduja sauce

ICE CREAM (1/2/3 SCOOPS) (V/Vg) £ 5.00 / £8.00 / £10.00
Ask your waiter for the flavours of the day



SUSTAINABILITY SNAPSHOT

FOOD & DRINK



We prioritise responsibly sourced ingredients, working closely with trusted UK suppliers to ensure quality, traceability and reduced environmental impact across our menus.



We serve Belu filtered water in reusable glass bottles, eliminating single-use glass. Profits from Belu support clean water and sanitation projects globally.



We offer plant-based options across all menus, supporting more sustainable dining choices while maintaining a refined guest experience.



We offer plant-based milk alternatives free of charge to encourage more frequent use.



Our bar features a considered range of spirits, beers and wines from B-Corp certified, organic and responsibly sourced producers, with a focus on local suppliers where possible. Look for the 'B' icon next to our products.



An extensive list of low-intervention wines from growers who care about soil and biodiversity, including a curated selection of English wines.



Innovative creations inspired by a low-waste philosophy and seasonal botanicals, including a large array of non-alcoholic options.

OTHER



Sustainability is embedded into our operations through our EarthCheck certified Sustainability Management System, ensuring a structured and transparent approach.



We actively measure and monitor food waste across our operations, enabling targeted actions to reduce waste and improve efficiency.



We segregate and responsibly dispose of used cooking oil, which is collected by licensed contractors and converted into renewable energy sources such as biodiesel.



We operate with a zero single-use plastic approach across our Food & Beverage operations, prioritising reusable, refillable and recyclable materials.

*For allergen information please speak to a member of our team.
Please note there is a minimum spend of £35 per person, per hour and a
half, and a 13.5% service charge will be added to your final bill.*

*The Hari Bar & Terrace and The Hari hotel encourages responsible
drinking. In accordance with the Weights and Measures Act 1995,
the measure for the sale of spirits and liqueurs on the premises is 50ml,
Wines are available in 175ml and Champagne at 125ml as standard.
Smaller measures of wine and spirits are available upon request*

*Kindly note that smoking is only allowed when the roof is open, in
accordance with the Health Act 2006, which prohibits smoking in
enclosed public spaces to protect the health and safety of our guests.*

